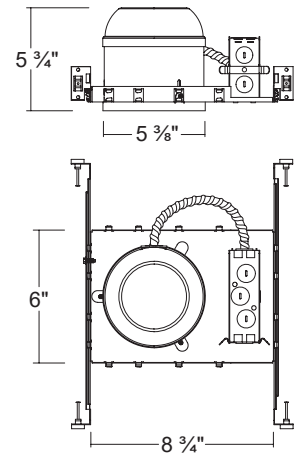


## H500SICA

5" IC Air-Tight Incandescent Shallow New construction Housing (Max. 75W)



### Dimensions



## ORDERING INFORMATION

Model No.	Description
H500SICA	5" IC Air-Tight Incandescent Shallow New construction Housing (Max. 75W)

## SPECIFICATION

### Plaster Frame

- Galvanized steel construction. The housing can be removed from plaster frame to provide access to the junction box

### Junction Box

- Listed for through branch circuit wiring
- Contains seven 7/8" knockouts and four Romex pryouts with strain relief

### Bar Hanger

- Pre-installed Real nail easily installs in regular lumber, engineered lumber
- Bar Hangers are adjustable from 13-5/8" to 25" and can be repositioned 90 degree on plaster frame

### Thermal Protector

- Self resetting thermal protector deactivates fixture if overheating occurs due to improper lamping or misapplied insulation.

### Listings

- cULus Listed for Damp Location
- cULus Listed for Feed Through
- Certified under ASTM-E283 for Air tight construction

## COMPATIBLE TRIMS

**T500** Eyeball



- **Incandescent**  
75W BR / Par30

**T513W** AT Cone Baffle



- **Incandescent**  
75W BR / Par30

**T508** Fresnel Shower



- **Incandescent**  
40W A19  
50W R / Par20

**T509** Albalite Shower



- **Incandescent**  
40W A19  
50W R / Par20

**T516** Dome Shower



- **Incandescent**  
40W A19  
50W R / Par20

**T507** Gimbal



- **Incandescent**  
75W BR / Par30

